

**GISELE OPPERMANN**

**LOOKBOOK**

**SAKI HAIR ARTIST**



**MODEL: GISELE OPPERMANN**  
**ART DIRECTION / MAKE UP / STYLING: SAKI HAIRARTIST**  
**HAIR: SAKI HAIRARTIST**  
**CUT AND COLOR: ETOILAGE by SAKI HAIRARTIST**  
**MEDAVITALUXIVA (4.3 /8.4 7.46 1:1)**  
**PRODUCT: BLACK GOLD EXTENSIONS**  
**FASHION BY: TATJANA WARNECKE**  
**PHOTO: GUIDO FRIEDRICH**

**MODEL: GISELE OPPERMANN**  
**ART DIRECTION / MAKE UP / STYLING: SAKI HAIRARTIST**  
**HAIR: SAKI HAIRARTIST**  
**CUT AND COLOR: ETOILAGE by SAKI HAIRARTIST**  
**MEDAVITA LUXIVA (4.3 /8.4 7.46 1:1)**  
**PRODUCT: BLACK GOLD EXTENSIONS**  
**FASHION BY: TATJANA WARNECKE**  
**PHOTO: GUIDO FRIEDRICH**



gf-kreativ.de



gf-kreativ.de

gf-kreativ.de

MODEL: GISELE OPPERMANN  
ART DIRECTION / MAKE UP / STYLING: SAKI HAIR ARTIST  
HAIR: SAKI HAIR ARTIST  
CUT AND COLOR: ETOILAGE by SAKI HAIR ARTIST  
MEDAVITALUXIVA (4.3 / 8.4 7.46 1:1)  
PRODUCT: BLACK GOLD EXTENSIONS  
FASHION BY: TATJANA WARNECKE  
PHOTO: GUIDO FRIEDRICH

**MODEL: GISELE OPPERMANN**  
**ART DIRECTION / MAKE UP / STYLING: SAKI HAIRARTIST**  
**HAIR: SAKI HAIRARTIST**  
**CUT: FUTURE BOB by SAKI HAIRARTIST**  
**PRODUCTS: BENI DURRER BEAUTY /**  
**MEDAVITA LUXVIVA COLOR NONCOLOR 3N**  
**FASHION BY: LA LUNA FASHION**  
**PHOTO: TRIGGER HIPPIE**



**MODEL: GISELE OPPERMANN**  
**ART DIRECTION / MAKE UP / STYLING: SAKI HAIRARTIST**  
**HAIR: SAKI HAIRARTIST**  
**CUT: FUTURE BOB by SAKI HAIRARTIST**  
**PRODUCTS: BENI DURRER BEAUTY**  
**/MEDAVITA LUXVIVA COLOR NONCOLOR 3N**  
**FASHION BY: LA LUNA FASHION**  
**PHOTO: TRIGGER HIPPIE**

MODEL: GISELE OPPERMAN  
ART DIRECTION / MAKE UP / STYLING: SAKI HAIRARTIST  
HAIR: SAKI HAIRARTIST  
CUT: FUTURE BOB by SAKI HAIRARTIST  
PRODUCTS: BENI DURRER BEAUTY / MEDAVITA LUXVIVA COLO R NON COLOR 3N  
FASHION BY: LA LUNA FASHION  
PHOTO: TRIGGERHIPPIE





MODEL: GISELE OPPERMANN  
ARTDIRECTION/MAKEUP/STYLING: SAKI  
HAIRARTIST  
HAIR: SAKI HAIRARTIST  
CUT: FUTURE BOB by SAKI HAIRARTIST  
PRODUCTS: BENI DURRER BEAUTY/  
MEDAVITA LUXVIVA COLOR NONCOLOR  
3N  
FASHION BY: LA LUNA FASHION  
PHOTO: TRIGGERHIPPIE



MODEL: GISELE OPPERMANN  
ART DIRECTION / MAKE UP / STYLING: SAKI HAIRARTIST  
HAIR: SAKI HAIRARTIST  
CUT: FUTURE BOB by SAKI HAIRARTIST



PRODUCTS: BENI DURRER BEAUTY / MEDAVITA LUXVIVA COLOR NONCOLOR 3N  
FASHION BY: LA LUNA FASHION  
PHOTO: TRIGGERHIPPIE





MODEL: GISELE OPPERMAN

ART DIRECTION / MAKEUP / STYLING: SAKI HAIRARTIST

HAIR: SAKI HAIRARTIST

CUT: FUTURE BOB by SAKI HAIRARTIST

PRODUCTS: BENDURRER BEAUTY


AVIATOR LUXIVA COLOR NONCOLOR 3N

FASHION BY: LAI LINA FASHION

PHOTO: TRIG GERHIPPHE

MODEL: GISELE OPPERMANN  
ART DIRECTION / MAKEUP / STYLING: SAKI  
HAIR ARTIST  
HAIR: SAKI HAIR ARTIST  
CUT: FUTURE BOB by SAKI HAIR ARTIST  
PRODUCTS: BENEDIKTER BEAUTY /  
MEDAVITA LUXVIVA  
COLOR NONCOLOR 3N  
FASHION BY: TATJANA WARNECKE  
PHOTO: CHRIS W. BRAUNSCHWEIGER





MODEL: GISELE OPPERMANN  
ART DIRECTION / MAKE UP / STYLING: SAKI  
HAIR ARTIST  
HAIR: SAKI HAIR ARTIST  
CUT: FUTURE BOB by SAKI HAIR ARTIST  
PRODUCTS: BENIDURRER BEAUTY  
/ MEDAVITA LUXVIVA COLOR NON COLOR 3N  
FASHION BY: TAJANA WARNECKE  
PHOTO: CHRIS W. BRAUNSCHWEIGER

MODEL: GISELE OPPERMANN

ART DIRECTION / MAKE UP / STYLING: SAKI HAIRARTIST

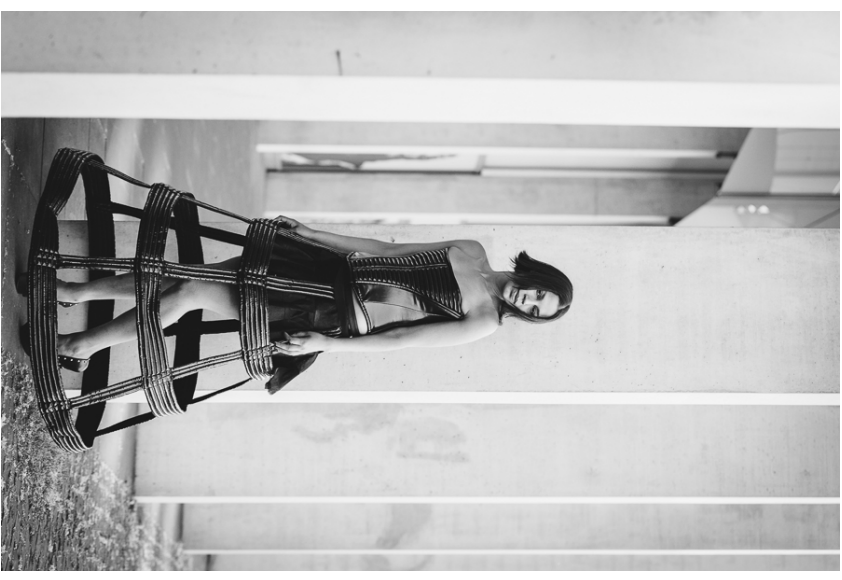
HAIR & CUT: FUTURE BOB by SAKI HAIRARTIST



PRODUCTS: BENI DURRER BEAUTY / MEDAVITA LUXVIVA COLOR NONCOLOR 3N

FASHION BY: TATJANA WARNECKE

PHOTO: CHRIS W. BRAUNSCHWEIGER

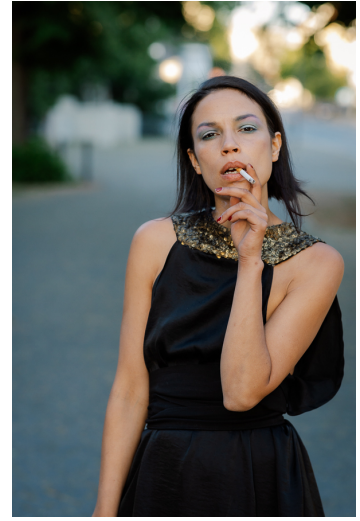




MODEL: GISELLE OPPERMANN  
ART DIRECTION / MAKE UP / STYLING: SAKI  
HAIRARTIST  
HAIR: SAKI HAIRARTIST  
CUT: FUTURE BOB by SAKI HAIRARTIST  
PRODUCTS: BENI DURRER BEAUTY /  
MEDAVITA LUXVIVA  
COLOR NON COLOR N3  
FASHION BY: TATJANA WARNECKE  
PHOTO: CHRIS W. BRAUNSCHWEIGER



MODEL: GISELE OPPERMANN  
ART DIRECTION / MAKE UP / STYLING: SAKI HAIR ARTIST  
HAIR: SAKI HAIR ARTIST  
GUE: FUTURE BOBBY SAKI HAIR ARTIST  
PRODUCTS: PENIDURRER BEAUTY  
PRODUCED BY: PENIDURRER BEAUTY  
MEDAVITAL LUXIVA COLOR A COLOR A NON COLOR A  
FASHION BY: LIBELLE CHARLIE COUTURE  
PHOTO: CHRIS W. BRAUNSCHWEIGER



MODEL: GISELE OPPERMANN  
 ART DIRECTION / MAKE UP / STYLING: SAKI HAIRARTIST  
 HAIR: SAKI HAIRARTIST  
 CUT: FUTURE BOB by SAKI HAIRARTIST  
 PRODUCTS: BENI DURRER BEAUTY / MEDAVITA LUXVIVA COLOR NONCOLOR 3N  
 FASHION BY: LIBELLE CHARLIE COUTURE  
 PHOTO: CHRIS W. BRAUNSCHWEIGER

MODEL: GISELE OPPERMANN  
 ART DIRECTION / MAKE UP / STYLING: SAKI HAIRARTIST  
 HAIR: SAKI HAIRARTIST  
 CUT: FUTURE BOB by SAKI HAIRARTIST  
 PRODUCTS: BENI DURRER BEAUTY / MEDAVITA LUXVIVA COLOR NONCOLOR 3N  
 FASHION BY: LIBELLE CHARLIE COUTURE  
 PHOTO: CHRIS W. BRAUNSCHWEIGER

MODEL: GISELE OPPERMANN  
 ART DIRECTION / MAKE UP / STYLING: SAKI HAIRARTIST  
 HAIR: SAKI HAIRARTIST  
 CUT: FUTURE BOB by SAKI HAIRARTIST  
 PRODUCTS: BENI DURRER BEAUTY / MEDAVITA LUXVIVA COLOR NONCOLOR 3N  
 FASHION BY: LIBELLE CHARLIE COUTURE  
 PHOTO: CHRIS W. BRAUNSCHWEIGER







MODEL: GISELE OPPERMANN ART DIRECTION / MAKE UP / STYLING: SAKI HAIR ARTIST HAIR: SAKI HAIR ARTIST CUT: FUTURE BOB by SAKI HAIR ARTIST PRODUCTS: BENI DUBBER BEAUTY / MEDAVITA COLORSON COLOR3N FASHION BY: LIBELLE CHARLIE COUTURE PHOTO: CHRIS W. BRAUNSCHWEIGER



PHOTOS SELECTED BY ; ARTFULLY PRESENTED BY ; WITH MUCH LOVE FROM  
PHOTOS SELECTED BY ; ARTFULLY PRESENTED BY ; WITH MUCH LOVE FROM

# JOHN CHERRY JOHN CHERRY

